



# Matematika u prirodi

Primjene slicnosti

# Potrebni pribor



- Metar
- Ravnalo
- Ogledalo
- Bilježnica
- Olovka

# Mjerimo visinu skole uz pomoc zrcala



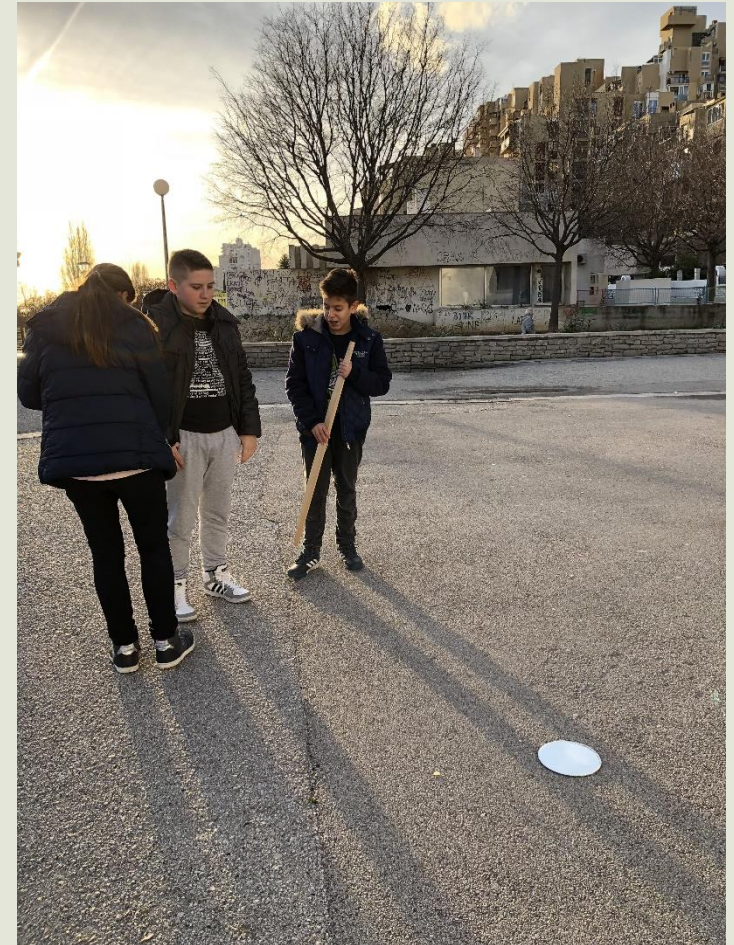


169cm

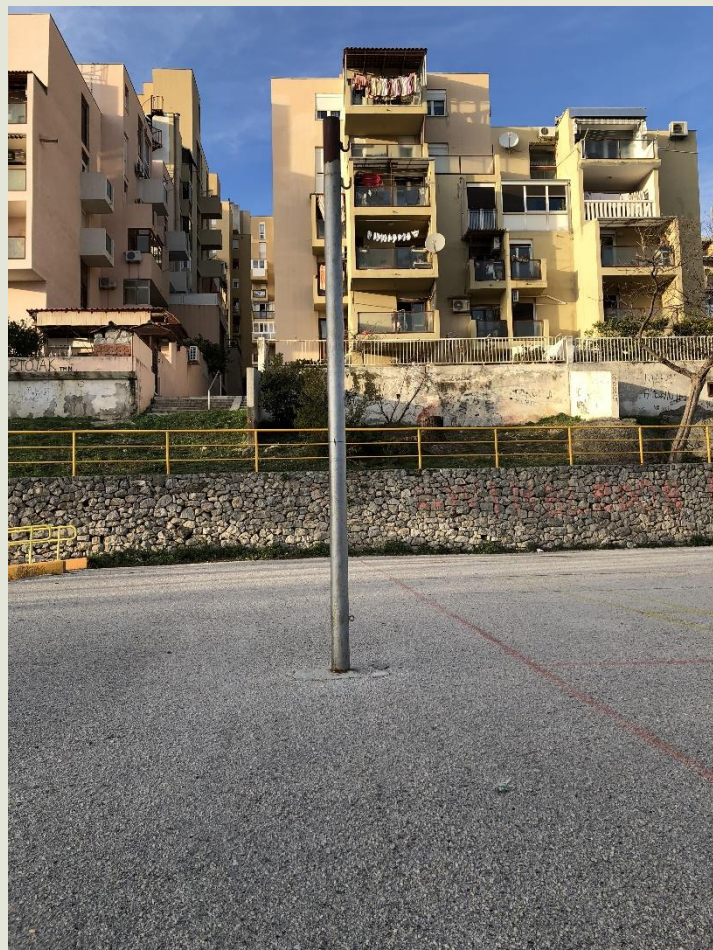
1013cm

## Rjesavanje

- $140:x=169:1013$
- $169x=141\ 820/:169$
- $X=839.17\text{cm}$



# Mjerimo visinu stupa uz pomoc zrcala



# Rjesavanje

- $X:140=415:215$
- $215x=58\ 100/:215$
- $x=270.23\text{cm}, 2.7\text{m}$



# Mjerimo visinu rasvjete uz pomoc zrcala



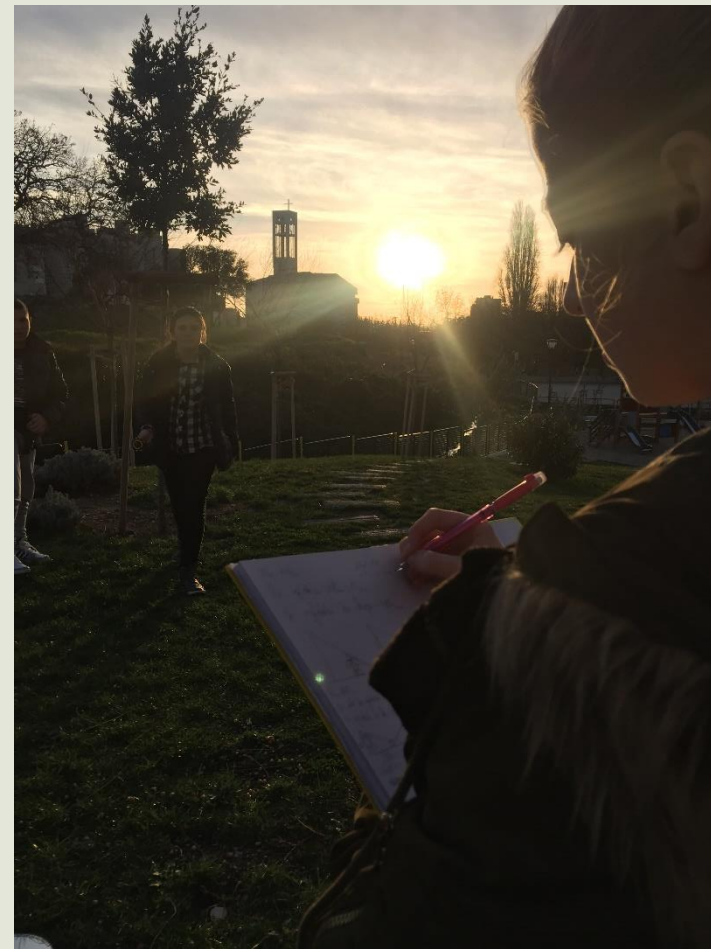


# Rjesavanje

- $X:137=491:112.5$
- $112.5x=67\ 267/:112.5$
- $X=597.97\text{cm}, 5.97\text{m}$



# Mjerimo visinu drveta uz pomoc ogledala





# Rjesavanje

- $140:x=144:441$
- $144x=61\ 740/:144$
- $X=428.75\text{cm},4.28\text{m}$



# Napravili

- Nikola Tomic
- Dora Tomic
- Sanja Tadic
- Vito Vajic

